



CAPABILITY Statement



AUSTRALIA'S PREMIER INDEPENDENT SECURITY
SYSTEMS INTEGRATOR

Contents

COMPANY OVERVIEW	3
OUR CAPABILITIES	5
OUR CORE COMPETENCIES	7
OUR ORGANISATIONAL STRUCTURE	8
OUR REACH	9
OUR PEOPLE	10
FINANCIAL	11
PROJECT MANAGEMENT	12
WORK HEALTH & SAFETY	15
ENVIRONMENTAL POLICY	16
PROJECT PORTFOLIO	17
ACCREDITATION AND CERTIFICATION	18

COMPANY Overview

ABOUT NeXT SECURITY

NeXT Security is a leader in the delivery of scalable, integrated security systems for corporate and public sector organisations.

We have a proven track record for delivering innovative and customised security solutions to over 2,000 clients.

That's why many blue chip corporations and government departments trust us with their sensitive and demanding security projects.

NeXT Security can help. From planning and design, to implementation and maintenance, we have the skills, knowledge and expertise to completely manage even the most sophisticated security systems.

WE CAN PROVIDE STAND-ALONE SYSTEMS OR ANY COMBINATION OF INTEGRATED SECURITY SOLUTIONS.

WHO WE WORK WITH

NeXT Security delivers turnkey, customised security solutions to a range of industry sectors including:

Banking & Finance

Construction & Engineering

Defence

Education

Government

Healthcare

Information Technology

Infrastructure & Utilities

OUR SECURITY SOLUTIONS

Our integration expertise spans the full breadth of electronic security systems, including:

ACCESS CONTROL

IDENTITY MANAGEMENT

INTRUDER DETECTION

NETWORKING INFRASTRUCTURE

VIDEO SURVEILLANCE

VISITOR MANAGEMENT

INTERCOM SYSTEMS

NeXT Security can provide stand-alone systems or any combination of integrated security solutions.

CUSTOMISED SOLUTIONS

We know the commercial "off-the-shelf" approach to enterprise security offered by many companies often falls short of the client's expectations. That's why we offer a solution customised to your precise needs.

We work with you to provide a scalable solution and a long-term security strategy that's aligned with your critical requirements, budget, and available resources.

When appropriate, our professional engineering team develop innovative solutions for our clients. They have a track record of developing customised software applications to produce results that other security companies can't.

UNPARALLELED EXPERTISE

We have developed unique perspectives on security in a multitude of industries, and have developed industry best practices in design and implementation. Our team consists of the most qualified and experienced security consultants, technicians and engineers.

We've created a culture that attracts the best technical and management staff and keeps them up-to-date with state of the art security solutions and project management practices. Our people have the appropriate security clearances to satisfy even the most stringent client requirements.

TURNKEY SERVICE

NeXT Security provides a full turnkey service, from briefing and design, through to installation and maintenance. Comprehensive project management is complemented by expert monitoring and technical support, 24 hours a day, 365 days a year.

We integrate security systems across access control, video surveillance, intruder detection and network products and services.

Our Managed Service allows you to outsource your day-to-day security system management responsibilities, giving you peace of mind knowing you're protected. From a single alarm system to a fully blown digital video surveillance and access control system, our Managed Service provides secure, reliable and scalable remote security, including:

ALARM MONITORING

ACCESS CARD MANAGEMENT

IDENTITY MANAGEMENT

DATABASE BACK-UP AND DISASTER RECOVERY SERVICES

REMOTE SYSTEMS PROGRAMMING

VIDEO SURVEILLANCE AS A SERVICE

Our Capabilities

INTEGRATED SYSTEMS

NeXT Security is a proven specialist in the area of security system integration. Whether it is a new installation or enhancements to an existing security system, we can integrate a system to meet your needs.

There are many aspects involved in successfully implementing an integrated security solution. New technologies are providing Security, IT, and Facility Managers with the ability to integrate access control, intrusion detection, and video surveillance systems under a unified security platform.



ACCESS CONTROL

Access control is a key component in protecting your office or facility, maintaining business continuity, and ensuring employee and customer safety.

Through our exceptional engineering, product benchmarking, and experience, we can help you determine what type of access control system is best for your unique needs and environment. Our access control solutions can integrate with your video surveillance system, human resources database, with IT (including single sign-on capabilities), or with any other compatible system.

You can rely on NeXT Security to be an independent resource that will listen to your needs and help you align your security goals with your corporate mission and vision.

VIDEO SURVEILLANCE

The applications for video surveillance systems are constantly expanding. Surveillance cameras can be integrated with access control functions to automatically focus on a specific door as it is activated by an access control reader or alarm input.

NeXT Security's team of Video Surveillance IT engineers bring considerable experience and expertise to designing and installing sophisticated systems with large guard station consoles, high-speed pan-tilt-zoom camera systems, IP, analytics and specialty cameras. NeXT Security engineers are proficient system integrators, capable of integrating video surveillance with access control and identity management into a single seamless integrated system.

INTRUDER AND DURESS ALARM SYSTEMS

As your Security partner, NeXT Security will utilise its years of experience with these systems to help you determine the specific intrusion detection and duress alarm solution that best fits your facility. We can engineer your systems so that all the components of your Security solution work correctly with each other, giving you the peace of mind that comes from knowing that your facility is safe on all fronts.



MANAGED SERVICES

NeXT Security's Managed Services are a broad set of services which provide you with consistent, reliable and proactive day to day management of your security systems, infrastructure and services. Out-tasking security system management and services to NeXT Security delivers maximum performance and uptime maximising the investment our clients have made in their security systems. Our services include:

1. REMOTE SYSTEM PROGRAMMING

Cost-Effective, Outsourced Security System Programming

Ongoing system programming is vital to keeping your security system working properly. Leave it to the specialists.

2. ALARM MONITORING

Alarm Monitoring Services provide an important and vital service for the security conscious customer. To "Future Proof" your alarm monitoring requirements, NeXT Security provides a full suite of alarm monitoring options including NBN ready IP monitoring.

3. ACCESS CARD MANAGEMENT

NeXT Security' Card Management Services take the hassle out of ordering cards for your security systems - whether you have a single site or multiple sites with a variety of disparate access systems, we can streamline the process. Card Personalisation Services are also available for extra security and identity.

4. MAINTENANCE PLANS

We offer a range of proactive support and maintenance plans which ensure you always have the highest level of security protection and help you manage your security budget with fixed annual plans.



Our Core Competencies

SERVICE CENTRIC

We at NeXT Security realise that our competitors can supply, install and maintain the same security hardware that we supply. Therefore in order to differentiate ourselves from our competitors we knew our service had to be better.

As a result, we have increased our portfolio of services and have made a fundamental shift towards service-centric business model in order to serve you better.

SOLUTIONS THINKING

Most businesses still consider security as a fixed cost, but there are many opportunities to achieve financial savings and increased productivity through better security management.

Our Solutions Thinking is designed around letting you get on with running your core business and let us offer solutions for protecting your business.

SYSTEM DESIGN & ENGINEERING

Our development engineering helps you understand what's possible given your project timelines, budgets and desired system performance. We also provide the detailed information necessary for design and implementation.

Our detail plans and AutoCAD drawings include all necessary technology and system components. Once approved, the security system documentation is distributed to the implementation team for project delivery.

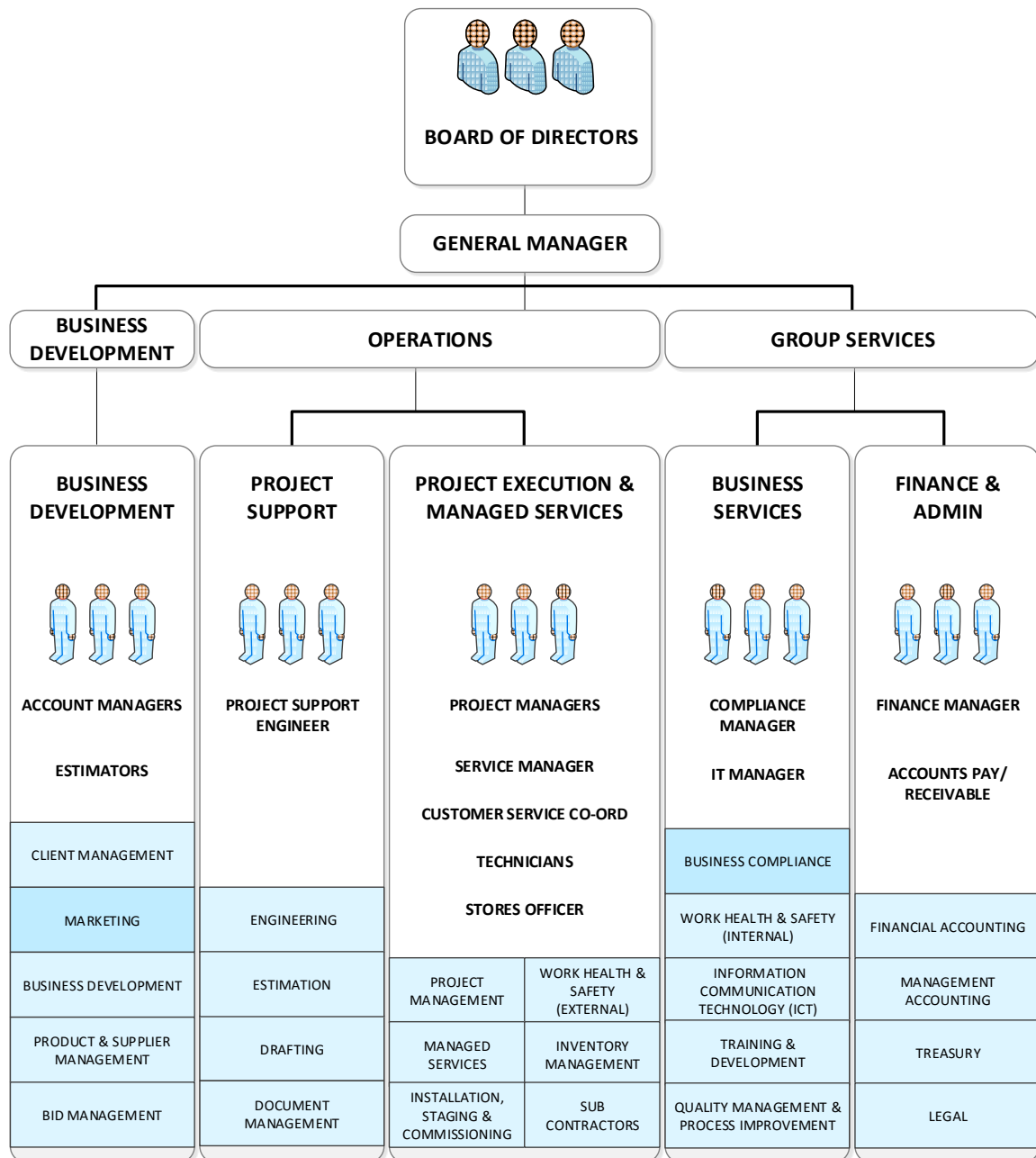
SYSTEM IMPLEMENTATION

We work closely with you to develop an implementation plan that minimise the impact to your employees and operations. Our installation team is sensitive to your work environment and adheres to all safety regulations and site rules.

PROJECT MANAGEMENT

Our project management team has built a strong reputation for delivering projects on time to specification. Your project manager is responsible for ensuring your satisfaction throughout the implementation phase.

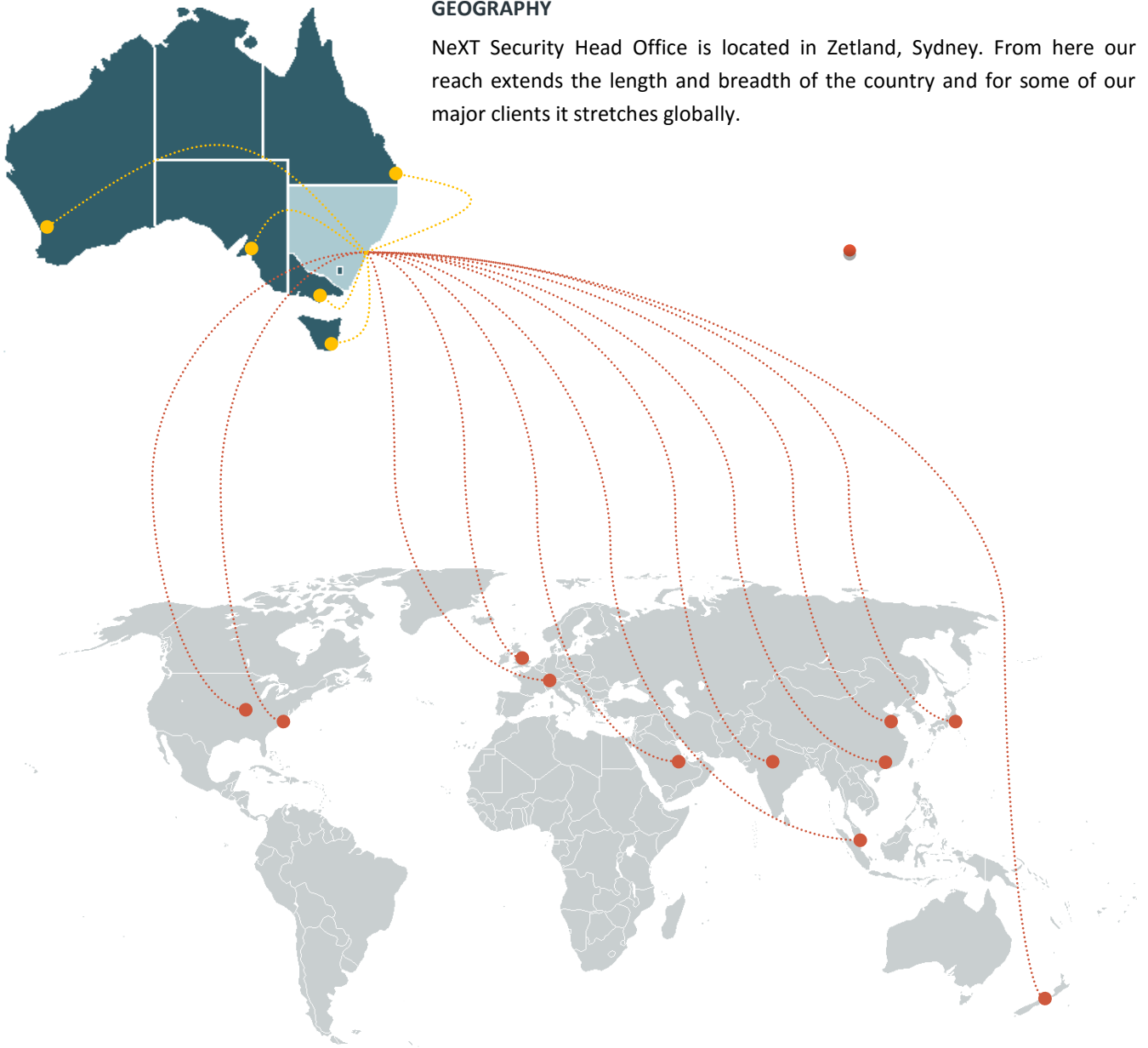
Our Organisational Structure



Our Reach

GEOGRAPHY

NeXT Security Head Office is located in Zetland, Sydney. From here our reach extends the length and breadth of the country and for some of our major clients it stretches globally.



Our People

CULTURE

NeXT Security recognises that great companies are about great people, as part of our vision to become the number one Security Systems Integrator in Australia, we are committed to the development and retention of people.

NeXT Security currently employs 30 full time employees.

LEARNING AND DEVELOPMENT

We provide training and development to our people that is designed to meet their needs and the needs of our organisation. Our training programs focus on our people's professional and personal development and include training in different aspects of the business.

The Security Industry continues to grow and its products and solutions continue to converge with those of the IT Industry and therefore it is important that our people understand and embrace Information Technology. With the rapid change in technology, NeXT Security ensures that our people are trained to work with current technologies.

Financial

FINANCIAL SUMMARY

NeXT Security's financial performance is evidence of an outstanding business model and strong management that has delivered increases in both revenues and profitability.



NeXT Security continues to reinvest in the business to fund organic growth with no balance sheet gearing.

INSURANCES

Public Liability	Insured Limit	\$20,000,000
Professional Indemnity	Insured Limit	\$10,000,000
Product Liability	Insured Limit	\$20,000,000
Workers Compensation	Insured Limit	\$2,800,000
Motor Vehicle Insurance	Insured Limit	\$30,000,000

PROJECT Management

Our approach to Project Managing the delivery of a security system is based upon the guiding principles and standards found within the Project Management Body of Knowledge (PMBok) developed by members of the Project Management Institute – Sydney Chapter.



We have adopted and implemented the following phases in order to deliver our projects.

PROJECT INITIATION

Project Initiation is the first phase in the Project Life Cycle and essentially involves starting up the project. NeXT Security will initiate the project by defining its purpose and scope, the justification for initiating it and the solution to be implemented.

We put in place a suitably skilled project team headed by a qualified Project Manager that is supported by Engineers, CAD Drafters and support personnel.

PROJECT PLANNING

After defining the project and appointing the project team, we are ready to enter the detailed Project Planning phase. This involves creating a suite of planning documents to help guide the team throughout the project delivery. This will include system design schematics, point schedules, program of works, construction package, and bill of materials, resource schedule and a financial plan.

PROJECT EXECUTION

With a clear understanding of the project and a suite of detailed project plans, we are now ready to enter the Execution phase of the project.

This is the phase in which we implement our construction plans by roughing in the backbone infrastructure, install field equipment and plan for the main control equipment to be installed.

Whilst this is all taking place we are staging the main control equipment in our Staging Facility and running up the servers and software for the head-end equipment. This critical stage forms part of our Factory Acceptance & Testing (FAT) procedure.

Further to that commences the system programming, commissioning, inspecting and testing of the security system to ensure it operates and functions as specified. This is our Site Acceptance Test (SAT).

While each deliverable is being constructed, a suite of management processes are undertaken to monitor and control the deliverables being output by the project.

These processes include managing time, cost, quality, variations, risks, issues, suppliers, clients, contractors and communication.

Once all the deliverables have been produced and the Client has accepted the final solution, the project is ready for closure.

PROJECT CLOSURE

Project Closure involves releasing the final deliverables to the Client, handing over the project documentation (CAD Drawings / As Built Drawings / Operation & Maintenance Manuals etc.) and provides training.

As well at this stage we wind down the project by terminating supplier contracts, releasing project resources and communicating project closure to all stakeholders.

The last remaining step is to undertake a Post Construction Review to identify the level of project success and note any lessons learned for future projects.

PRACTICAL COMPLETION

On the satisfactory acceptance of our work from either the Head Contractor or Client we submit our Certificate of Practical Completion.

While each deliverable is being constructed, a suite of management processes are undertaken to monitor and control the deliverables being output by the project.



DEFECTS LIABILITY PERIOD

On the achievement of Practical Completion, NeXT Security commences our commitment to provide 12 months warranty on all parts and labour which is known as the Defects Liability Period (DLP).

OPERATION & MAINTENANCE MANUALS

Complete project installation, maintenance and operation manuals are provided at the completion of the installation. Manuals are tailored to meet the specific needs of our client. Quick Reference guides can be generated to assist system operators and technical personnel in the day-to-day operation and maintenance of the system.



AS BUILT DRAWINGS

As defined by the Scope of Work on the project, NeXT Security will work closely with you to generate design, installation, and/or As-built system drawings. NeXT Security will provide reproducible, as-built drawings based on client-provided floor plans as required.



To ensure effective communication of our health and safety policy, NeXT Security will consult with our people at all levels regarding health and safety issues and engage them in initiating improvement.

WORK

Health & Safety

At NeXT Security, our work, health and safety policy is an integral part of our everyday activities. Our priority is ensuring that the safety and health of our employees, contractors, visitors and stakeholders is a priority in our efforts to achieve an injury free work environment.

TO ACHIEVE THIS WE ARE COMMITTED TO:

The prevention and elimination of work related injury and illness.

The provision of a safe and healthy working environment for our people, subcontractors and visitors together with the wider community and members of the public on which our activities may impact.

The establishment, implementation and maintenance of our Occupational Health and Safety Management Systems in accordance with AS/NZS 4801 and OHSAS 18001.



TO ACHIEVE THIS WE WILL:

- Establish measurable health & safety objectives and targets to meet these intentions and regularly review our progress, ensuring that this policy remains relevant to our business and stakeholders.
- Identify, evaluate and manage all risks that flow from the work we do.
- Aim to comply with relevant Work, Health & Safety Act 2011, standards and codes of practice.
- Maintain a workplace culture that fosters behaviour amongst our people that we are all responsible for our own safety and health and that of our fellow workers.
- Promote fitness for work.
- Provide induction and training for our people

ENVIRONMENTAL Policy

To work effectively in a diverse range of environments and social settings, NeXT Security recognises the importance of integral environmental management into how we do business.

Our environmental policy objective is to minimise the adverse impact on the environment as a result of our business activities.

TO ACHIEVE THIS OBJECTIVE WE WILL:

- Establish and maintain an environmental management system in accordance with AS/NZS ISO 14001.
- Comply with contract conditions, relevant legislation and other criteria to which the company subscribes.
- Regularly review business operations, identify and implement opportunities for improvement.
- Educate our workforce on key environmental issues, management controls and associated responsibilities.
- Establish defined environmental objectives and targets to measure our performance and identify opportunities for improvement.
- Strive to prevent pollution, reduce waste and commit to recovery and recycling where feasible.



PROJECT Portfolio



Accreditation and Certification

Independent WHS Certification Companies		
	 sassi	 CBRE – Pulse Connect
	 THE RIGHT FIT	
Risk Consulting & Investigation	 Kroll	
		 HSBC – Global Review
		

Company

Next Security Pty. Ltd.

ABN 21 602 140 894

ACN 602 140 894

Address: 48 Epsom Road, Zetland NSW 2017

Telephone: +61 2 9310 1888

Facsimile: +61 2 9310 3311

Web: www.nextsecurity.com.au

Email: enquiries@nextsecurity.com.au

Established: 2/10/2014

Security Industry Master Licence

Licence No 000101349

Expires: 30/10/2016

Bank Details

National Bank of Australia

Address: Taren Point

BSB: 082-184

Account No. 74 314 3133

Remit to: accounts@nextsecurity.com.au

Public Liability & Professional Indemnity

EBM-14120088

Expires: 22/12/2016

Workers Compensation

Employers Mutual - A15610016

Expires: 30/11/2016